



BUSHING & HUB

(IN STOCK)



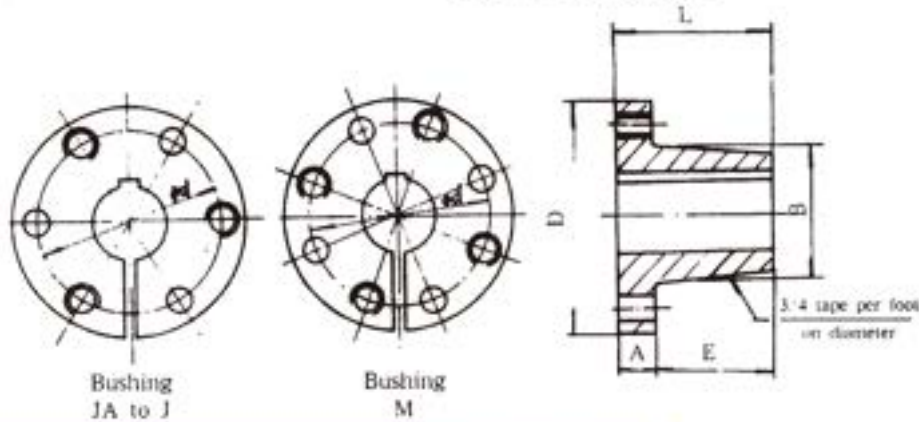
BUSHING

| | |
|--|-------------|
| QD Bushing | B.1 TO B.2 |
| QD Bushings and Sheaves Installation & Removal | B.3 |
| Taper Bushings | B.4 |
| QD Style Weld-On Hubs | B.5 |
| Taper Bushed Type S-type weld-on Hubs | B.6 |
| Split Taper Bushings | B.7 |
| Steel Hubs | B.8 TO B.10 |



BUSHING

QD Bushings



| Bushing | A | B | D | E | L | ΦBolt Required | Cap Screws Grade 5 |
|---------|-------|-------|---------|--------|---------|----------------|--------------------|
| JA | 5/16 | 1.375 | 2 | 11/16 | 1 | 1.665 | 3-10 x 1 |
| SH | 7/16 | 1.871 | 2 11/16 | 7/8 | 1 1/16 | 2 1/4 | 3 1/4 x 1 3/8 |
| SDS | 7/16 | 2.187 | 3 1/8 | 7/8 | 1 1/16 | 2 11/16 | 3 1/4 x 1 3/8 |
| SD | 7/16 | 2.187 | 3 1/8 | 1 3/8 | 1 13/16 | 2 11/16 | 3 1/4 x 1 7/8 |
| SK | 9/16 | 2.812 | 3 7/8 | 1 3/8 | 1 15/16 | 3 5/16 | 3 9/16 x 2 |
| SF | 5/8 | 3.125 | 4 5/8 | 1 7/16 | 2 1/16 | 3 7/8 | 3 9/16 x 2 |
| E | 7/8 | 3.843 | 6 | 1 7/8 | 2 1/4 | 5 | 3 1/2 x 2 1/4 |
| F | 1 | 4.437 | 6 5/8 | 2 3/4 | 3 1/4 | 5 5/8 | 3 9/16 x 3 5/8 |
| J | 1 1/8 | 5.148 | 7 1/4 | 3 1/2 | 4 5/8 | 6 1/4 | 3 9/16 x 4 1/2 |
| M | 1 1/4 | 6.500 | 9 | 5 1/2 | 6 1/4 | 7 7/8 | 4 1/4 x 6 3/4 |



| Bushing | Bore Range (in.) | Keyseat (in.) |
|---------|---------------------------------------|---------------|
| JA | 1/2, 9/16 | 1/8 x 1/16 |
| | 5/8, 11/16, 3/4, 13/16, 7/8 | 3/16 x 3/32 |
| | 15/16, 1 | 1/4 x 1/8 |
| | 1 1/16, 1 1/8, 1 1/4 | 5/16 x 5/32 |
| | 1 1/2 | No Key |
| SH | 1/2, 9/16 | 1/8 x 1/16 |
| | 5/8, 11/16, 3/4, 13/16, 7/8 | 3/16 x 3/32 |
| | 15/16, 1, 1 1/16, 1 1/8, 1 1/4, 1 1/2 | 1/4 x 1/8 |
| | 1 5/8, 1 3/4 | 5/16 x 5/32 |
| | 1 7/8, 1 1/2, 1 5/8, 1 3/4 | 3/8 x 1/8* |
| SDS | 1/2, 9/16 | 1/8 x 1/16 |
| | 5/8, 11/16, 3/4, 13/16, 7/8 | 3/16 x 3/32 |
| | 15/16, 1, 1 1/16, 1 1/8, 1 1/4, 1 1/2 | 1/4 x 1/8 |
| | 1 5/8, 1 3/4 | 5/16 x 5/32 |
| | 1 7/8, 1 1/2, 1 5/8, 1 3/4, 1 11/16 | 3/8 x 3/16* |
| SD | 13/16 | 3/8 x 1/8* |
| | 1 1/8 | 1/2 x 1/8* |
| | 1 1/4 | 1/2 x 1/8* |
| | 1 1/2, 1 5/8 | 1/2 x 1/8* |
| | 2 | No Key |

*shallow keyseat-keystock is supplied with bushing

| Bushing | Bore Range (in.) | Keyseat (in.) |
|---------|--|---------------|
| SD | 1/2, 9/16 | 1/8 x 1/16 |
| | 5/8, 11/16, 3/4, 13/16, 7/8 | 3/16 x 3/32 |
| | 15/16, 1, 1 1/16, 1 1/8, 1 1/4, 1 1/2 | 1/4 x 1/8 |
| | 1 5/8, 1 3/4 | 5/16 x 5/32 |
| | 1 7/8, 1 1/2, 1 5/8, 1 3/4, 1 11/16 | 3/8 x 3/16 |
| SK | 13/16 | 3/8 x 1/8* |
| | 1 1/8 | 1/2 x 1/8* |
| | 1 1/4 | 1/2 x 1/8* |
| | 1 1/2, 1 5/8 | 1/2 x 1/8* |
| | 2 | No Key |
| SF | 1/2, 9/16 | 1/8 x 1/16 |
| | 5/8, 11/16, 3/4, 13/16, 7/8 | 3/16 x 3/32 |
| | 15/16, 1, 1 1/16, 1 1/8, 1 1/4, 1 1/2 | 1/4 x 1/8 |
| | 1 5/8, 1 3/4 | 5/16 x 5/32 |
| | 1 7/8, 1 1/2, 1 5/8, 1 3/4, 1 11/16, 1 3/4 | 3/8 x 3/16 |
| SDS | 1 13/16, 1 7/8, 1 5/8, 2, 2 1/16 | 1/2 x 1/4 |
| | 2 1/8, 2 1/4 | 1/2 x 1/4 |
| | 2 1/2, 2 3/8, 2 1/2 | 5/8 x 3/16* |
| | 2 5/8, 2 11/16, 2 3/4, 2 7/8 | 5/8 x 1/8* |
| | 2 13/16 | 3/4 x 1/8* |
| SD | 2 1/2, 2 5/8 | No Key |
| | 1/2, 9/16 | 1/8 x 1/16 |
| | 5/8, 11/16, 3/4, 13/16, 7/8 | 3/16 x 3/32 |
| | 15/16, 1, 1 1/16, 1 1/8, 1 1/4, 1 1/2 | 1/4 x 1/8 |
| | 1 5/8, 1 3/4 | 5/16 x 5/32 |
| SK | 1 7/8, 1 1/2, 1 5/8, 1 3/4, 1 11/16, 1 3/4 | 3/8 x 3/16 |
| | 1 13/16, 1 7/8, 1 5/8, 2, 2 1/16 | 1/2 x 1/4 |
| | 2 1/8, 2 1/4, 2 1/4 | 1/2 x 1/4 |
| | 2 1/2, 2 3/8, 2 1/2, 2 1/2 | 5/8 x 3/16* |
| | 2 5/8, 2 11/16, 2 3/4, 2 7/8 | 5/8 x 1/8* |
| SF | 2 13/16 | 3/4 x 1/8* |
| | 2 1/2, 2 5/8 | No Key |



BUSHING

QD Bushings

| Bushing | Bore Range (in.) | Keyseat (in.) | |
|---|---|--------------------------------|-----------|
| E | 7/8, 1 1/16 | 3/16 x 3/32 | |
| | 1, 1 1/16, 1 1/8, 1 1/4, 1 1/2 | 1/4 x 1/8 | |
| | 1 5/8, 1 3/4 | 5/16 x 5/32 | |
| | 1 7/8, 1 1/2, 1 9/16, 1 5/8, 1 11/16, 1 3/4 | 3/8 x 3/16 | |
| | 1 13/16, 1 7/8, 1 15/16, 2, 2 1/16 | 1/2 x 1/4 | |
| | 2 1/8, 2 1/16, 2 1/4 | 1/2 x 1/4 | |
| | 2 1/8, 2 3/8, 2 1/2, 2 1/4, 2 5/8, 2 3/4 | 5/8 x 1/2 | |
| | 2 11/16, 2 3/4 | 5/8 x 1/2 | |
| | 2 13/16, 2 7/8, 2 15/16, 3, 3 1/16 | 3/4 x 1/2* | |
| | 3 1/8, 3 1/4, 3 1/2 | 3/4 x 1/2* | |
| | 3 1/8, 3 3/8, 3 1/2 | 7/8 x 1/2* | |
| | 3 1/2 | No Key | |
| | F | 1, 1 1/16, 1 1/8, 1 1/4, 1 1/2 | 1/4 x 1/8 |
| 1 5/8, 1 3/4 | | 5/16 x 5/32 | |
| 1 7/8, 1 1/2, 1 9/16, 1 5/8, 1 11/16, 1 3/4 | | 3/8 x 3/16 | |
| 1 13/16, 1 7/8, 1 15/16, 2, 2 1/16 | | 1/2 x 1/4 | |
| 2 1/8, 2 1/16, 2 1/4 | | 1/2 x 1/4 | |
| 2 1/8, 2 3/8, 2 1/2, 2 1/4, 2 5/8, 2 3/4 | | 5/8 x 1/2 | |
| 2 11/16, 2 3/4 | | 5/8 x 1/2 | |
| 2 13/16, 2 7/8, 2 15/16, 3, 3 1/16 | | 3/4 x 3/8 | |
| 3 1/8, 3 1/4, 3 1/2 | | 3/4 x 3/8 | |
| 3 1/8, 3 3/8, 3 1/2, 3 3/4 | | 7/8 x 3/16* | |
| 3 5/8, 3 11/16, 3 3/4 | | 7/8 x 3/16* | |
| 3 7/8, 3 15/16 | | 1 x 1/8* | |
| 4 | | No Key | |
| J | 1 7/8, 1 1/2, 1 9/16, 1 5/8, 1 11/16, 1 3/4 | 3/8 x 3/16 | |
| | 1 7/8, 1 15/16, 2, 2 1/16 | 1/2 x 1/4 | |
| | 2 1/8, 2 1/16, 2 1/4 | 1/2 x 1/4 | |
| | 2 1/8, 2 3/8, 2 1/2, 2 1/4, 2 5/8, 2 3/4 | 5/8 x 1/2 | |
| | 2 11/16, 2 3/4, 2 15/16 | 5/8 x 1/2 | |
| | 2 13/16, 2 7/8, 3, 3 1/16 | 3/4 x 3/8 | |
| | 3 1/8, 3 1/4, 3 1/2 | 3/4 x 3/8 | |
| | 3 1/8, 3 3/8, 3 1/2, 3 3/4 | 7/8 x 7/16 | |
| | 3 5/8, 3 11/16, 3 3/4 | 7/8 x 7/16 | |
| | 3 13/16, 3 7/8, 3 15/16 | 1 x 3/8* | |
| | 4, 4 1/8, 4 1/4, 4 1/2, 4 3/4, 4 1/2, 4 5/8 | 1 x 3/8* | |
| | M | 1 15/16, 2, 2 1/16, 2 1/4 | 1/2 x 1/4 |
| | | 2 1/8, 2 1/4, 2 1/2 | 1/2 x 1/4 |
| 2 1/8, 2 3/8, 2 1/2, 2 3/4, 2 5/8 | | 5/8 x 1/2 | |
| 2 11/16, 2 3/4, 2 15/16 | | 5/8 x 1/2 | |
| 2 13/16, 2 7/8, 3, 3 1/16 | | 3/4 x 3/8 | |
| 3 1/8, 3 1/4, 3 1/2, 3 3/4 | | 3/4 x 3/8 | |
| 3 1/8, 3 3/8, 3 1/2, 3 3/4 | | 7/8 x 7/16 | |
| 3 5/8, 3 11/16, 3 3/4 | | 7/8 x 7/16 | |
| 3 13/16, 3 7/8, 3 15/16 | | 1 x 1/2 | |
| 4, 4 1/8, 4 1/4, 4 1/2, 4 3/4, 4 1/2, 4 5/8 | | 1 x 1/2 | |
| 4 5/8, 4 11/16, 4 3/4, 4 13/16 | | 1 1/4 x 5/8 | |
| 4 7/8, 4 15/16 | | 1 1/4 x 3/4* | |
| 5, 5 1/16, 5 1/4, 5 1/2, 5 3/4, 5 1/2 | | 1 1/4 x 3/4* | |
| N | CALL FOR AVAILABILITY | | |
| P | CALL FOR AVAILABILITY | | |

| Bushing | Bore Range (mm) | Keyseat (mm) | |
|------------|-----------------|--------------|---------|
| JA | 15, 16 | 5 x 5 | |
| | 19, 20 | 6 x 6 | |
| | 24, 25, 28 | 8 x 7 | |
| SH | 20, 22 | 6 x 6 | |
| | 24, 25, 28, 30 | 8 x 7 | |
| | 32, 35, 38 | 10 x 8 | |
| SDS | 24, 25, 28, 30 | 8 x 7 | |
| | 32, 35, 38 | 10 x 8 | |
| | 40, 42 | 12 x 8 | |
| SD | 24, 25, 28, 30 | 8 x 7 | |
| | 32, 35, 38 | 10 x 8 | |
| | 40, 42 | 12 x 8 | |
| SK | 14 | 5 x 5 | |
| | 24, 25, 28, 30 | 8 x 7 | |
| | 32, 35, 38 | 10 x 8 | |
| | 40, 42 | 12 x 8 | |
| | 45, 48, 50 | 14 x 9 | |
| | 55 | 16 x 10 | |
| SF | 28, 30 | 8 x 7 | |
| | 32, 35, 38 | 10 x 8 | |
| | 40, 42 | 12 x 8 | |
| | 45, 48, 50 | 14 x 9 | |
| | 55 | 16 x 10 | |
| | 60, 65 | 18 x 11 | |
| E | 35, 38 | 10 x 8 | |
| | 40, 42 | 12 x 8 | |
| | 45, 48, 50 | 14 x 9 | |
| | 55 | 16 x 10 | |
| | 60, 65 | 18 x 11 | |
| | 70, 75 | 20 x 12 | |
| | 80 | 22 x 14 | |
| | F | 42 | 12 x 8 |
| | | 45, 48, 50 | 14 x 9 |
| | | 55 | 16 x 10 |
| 60, 65 | | 18 x 11 | |
| 70, 75 | | 20 x 12 | |
| 80, 85 | | 22 x 14 | |
| J | 50 | 14 x 9 | |
| | 55 | 16 x 10 | |
| | 60, 65 | 18 x 11 | |
| | 70, 75 | 20 x 12 | |
| | 80, 85 | 22 x 14 | |
| | 90, 95 | 25 x 14 | |
| | 100 | 28 x 16 | |
| | M | 80 | 22 x 14 |
| | | 90 | 25 x 14 |
| 100 | | 28 x 16 | |
| 120 | | 32 x 18 | |

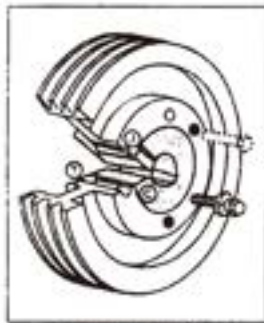
*Shallow Keyseat-Keystock is supplied with bushing



BUSHING

QD Bushings and Sheaves Installation & Removal

QD bushing sizes JA through J can be assembled in either of the two positions shown below. Size M should be assembled in position one.



Position 1

Position One is the conventional or standard mounting.



Position 2

Position Two (Reverse Mounting) may be necessary in some cases, such as mounting small sheaves with blind holes (not drilled through).

| Bushing Size | Cap Screw Size & Thread | Foot Pounds Wrench Torque* |
|--------------|-------------------------|----------------------------|
| JA | No. 10 | 3 |
| SH | ¼ - 20 | 6 |
| SDS | ¼ - 20 | 6 |
| SD | ¼ - 20 | 6 |
| SK | ⅜ - 18 | 10 |
| SF | ¾ - 16 | 20 |
| E | ½ - 13 | 40 |
| F | ⅝ - 12 | 50 |
| J | ¾ - 11 | 90 |
| M | ¾ - 12 | 150 |

*For Normal Applications. For Severe (Rock-crusher type) applications these values can be increased by a maximum of 50%.

CAUTION:

Excessive cap-screw torque can cause sheave and/or bushing breakage. The use of lubricants can cause sheave breakage.

DO NOT USE LUBRICANTS IN THIS INSTALLATION!

INSTALLATION

1. Make sure the tapered-cone surface of the bushing and the mating bore of the sheave are free of all foreign substances, such as dirt, excess paint accumulations, metal chips, lubricants, etc.
2. For position one or two (whichever applies), line up the unthreaded holes (C) with the threaded holes (T) and insert cap screws with lock washers engaging only two or three threads. (*a)
3. With key in shaft keyway, slide the loosely-assembled unit onto shaft and position for good belt alignment. (*b, *c) **Use no lubricants or anti-seize compound on threads or tapered surfaces.**
4. Carefully tighten the capscrews alternately and progressively until the tapers are seated (at approximately half the recommended torque).
5. Check alignment and sheave runout (wobble) and correct as necessary.
6. Continue careful alternate and progressive tightening of the cap screws to the recommended torque values shown in the table. **Maximum torque should be achieved on each individual bolt only two times in the consecutive tightening.**

Note: When properly mounted, there will be a gap between the bushing flange and sheave after the screws are tightened.

Caution: Use of Lubricants and/or excessive screw torque can cause breakage.

7. Tighten the set screw, when available, to hold the key securely during operation.
- (*a) When mounting a sheave on M size bushing, position the threaded jack-apart hole (J) as far from the bushing saw as possible to reduce the possibility of bushing breakage.
- (*b) When installing large or heavy parts in *Position One*, it may be easier to mount the key and bushing on the shaft first. Then place the sheave on the bushing and align the holes.
- (*c) **Caution:** When mounting on a vertical shaft, provisions must be made, which will positively prevent the sheave and/or bushing from dropping during installation.

REMOVAL

1. Loosen and remove all mounting cap screws.
2. Insert cap screws in all threaded jack-screw holds (J).
3. Start with the screws furthest from the bushing saw slot and tighten all jack screws alternately and progressively. Keep turning the screws in small equal amounts until the tapered surfaces disengage.



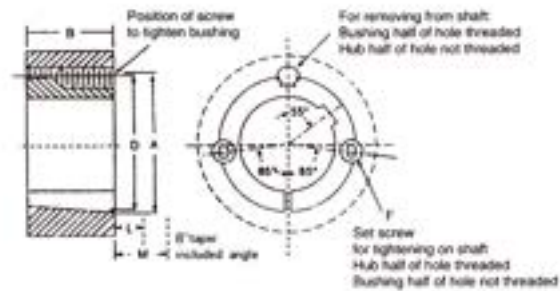
BUSHING

Taper Bushings Dimensions

No.1008 to 3030 Taper Bushing

| Bushing Number | Bore | wt. | Bushing Keyseat | Shaft Keyseat |
|----------------|-----------------|-----|-----------------|---------------|
| 1008 | 1/2 to 9/16 | .27 | 1/8 x 1/16 | 1/8 x 1/16 |
| | 5/8 to 7/8 | .21 | 3/16 x 3/32 | 3/16 x 3/32 |
| | 15/16 to 1 | .16 | 1/4 x 1/8 Δ | 1/4 x 1/8 |
| 1108 | 1/2 to 9/16 | .33 | 1/8 x 1/16 | 1/8 x 1/16 |
| | 5/8 to 7/8 | .27 | 3/16 x 3/32 | 3/16 x 3/32 |
| | 15/16 to 1 | .22 | 1/4 x 1/8 | 1/4 x 1/8 |
| 1210 | 1/2 to 9/16 | .61 | 1/8 x 1/16 | 1/8 x 1/16 |
| | 5/8 to 7/8 | .55 | 3/16 x 3/32 | 3/16 x 3/32 |
| | 15/16 to 1 1/4 | .49 | 1/4 x 1/8 | 1/4 x 1/8 |
| 1215 | 1/2 to 9/16 | .8 | 1/8 x 1/16 | 1/8 x 1/16 |
| | 5/8 to 7/8 | .7 | 3/16 x 3/32 | 3/16 x 3/32 |
| | 15/16 to 1 1/4 | .6 | 1/4 x 1/8 | 1/4 x 1/8 |
| 1310 | 1/2 to 9/16 | .7 | 1/8 x 1/16 | 1/8 x 1/16 |
| | 5/8 to 7/8 | .7 | 3/16 x 3/32 | 3/16 x 3/32 |
| | 15/16 to 1 1/4 | .6 | 1/4 x 1/8 | 1/4 x 1/8 |
| 1610 | 1/2 to 9/16 | .9 | 1/8 x 1/16 | 1/8 x 1/16 |
| | 5/8 to 7/8 | .8 | 3/16 x 3/32 | 3/16 x 3/32 |
| | 15/16 to 1 1/4 | .7 | 1/4 x 1/8 | 1/4 x 1/8 |
| 1615 | 1/2 to 9/16 | 1.2 | 1/8 x 1/16 | 1/8 x 1/16 |
| | 5/8 to 7/8 | 1.1 | 3/16 x 3/32 | 3/16 x 3/32 |
| | 15/16 to 1 1/4 | 1.0 | 1/4 x 1/8 | 1/4 x 1/8 |
| 1615 | 15/16 to 1 3/8 | .8 | 5/16 x 5/32 | 5/16 x 5/32 |
| | 17/16 to 1 1/2 | .7 | 3/8 x 3/16 | 3/8 x 3/16 |
| | 19/16 to 1 5/8 | .6 | 7/8 x 1/8 Δ | 7/8 x 3/16 |
| 2012 | 1/2 to 9/16 | 1.7 | 1/8 x 1/16 | 1/8 x 1/16 |
| | 5/8 to 7/8 | 1.6 | 3/16 x 3/32 | 3/16 x 3/32 |
| | 15/16 to 1 1/4 | 1.5 | 1/4 x 1/8 Δ | 1/4 x 1/8 |
| 2012 | 15/16 to 1 3/8 | 1.4 | 5/16 x 5/32 | 5/16 x 5/32 |
| | 17/16 to 1 1/2 | 1.2 | 3/8 x 3/16 | 3/8 x 3/16 |
| | 19/16 to 1 5/8 | 1.0 | 1/2 x 1/4 | 1/2 x 1/4 |
| 2517 | 1/2 to 9/16 | 3.5 | 1/8 x 1/16 | 1/8 x 1/16 |
| | 5/8 to 7/8 | 3.4 | 3/16 x 3/32 | 3/16 x 3/32 |
| | 15/16 to 1 1/4 | 3.3 | 1/4 x 1/8 | 1/4 x 1/8 |
| 2517 | 15/16 to 1 3/8 | 3.2 | 5/16 x 5/32 | 5/16 x 5/32 |
| | 17/16 to 1 1/2 | 3.0 | 3/8 x 3/16 | 3/8 x 3/16 |
| | 19/16 to 1 5/8 | 2.4 | 1/2 x 1/4 | 1/2 x 1/4 |
| 2525 | 2 1/16 to 2 1/2 | 1.9 | 5/8 x 3/16 Δ | 5/8 x 5/16 |
| | 3/4 to 7/8 | 4.9 | 3/16 x 3/32 | 3/16 x 3/32 |
| | 15/16 to 1 1/4 | 4.7 | 1/4 x 1/8 | 1/4 x 1/8 |
| 2525 | 15/16 to 1 3/8 | 4.5 | 5/16 x 5/32 | 5/16 x 5/32 |
| | 17/16 to 1 1/2 | 4.2 | 3/8 x 3/16 | 3/8 x 3/16 |
| | 19/16 to 1 5/8 | 3.3 | 1/2 x 1/4 | 1/2 x 1/4 |
| 3020 | 2 1/16 to 2 1/2 | 2.5 | 5/8 x 3/16 Δ | 5/8 x 5/16 |
| | 15/16 to 1 1/4 | 6.5 | 1/4 x 1/8 | 1/4 x 1/8 |
| | 15/16 to 1 3/8 | 6.3 | 5/16 x 5/32 | 5/16 x 5/32 |
| 3020 | 17/16 to 1 1/2 | 6.0 | 3/8 x 3/16 | 3/8 x 3/16 |
| | 19/16 to 1 5/8 | 5.3 | 1/2 x 1/4 | 1/2 x 1/4 |
| | 2 1/16 to 2 1/4 | 4.5 | 5/8 x 5/16 | 5/8 x 5/16 |
| 3030 | 2 1/16 to 3 | 3.9 | 3/4 x 1/4 Δ | 3/4 x 3/8 |
| | 15/16 to 1 1/4 | 9.2 | 1/4 x 1/8 | 1/4 x 1/8 |
| | 15/16 to 1 3/8 | 8.9 | 5/16 x 5/32 | 5/16 x 5/32 |
| 3030 | 17/16 to 1 1/2 | 8.6 | 3/8 x 3/16 | 3/8 x 3/16 |
| | 19/16 to 1 5/8 | 7.6 | 1/2 x 1/4 | 1/2 x 1/4 |
| | 2 1/16 to 2 1/4 | 6.2 | 5/8 x 5/16 | 5/8 x 5/16 |
| 3030 | 2 1/16 to 3 | 5.0 | 3/4 x 1/4 Δ | 3/4 x 3/8 |

1008 thru 3030 sizes



| Bushing Number | A | B | CΦ | | | D | F ₁ | L' | | M | |
|----------------|-------|-------|--------------------|--------------------|---------|---------|----------------|------------------|-----------|------------------|-----------|
| | | | Class 20 Gray Iron | Class 30 Gray Iron | Steel | | | Standard Hex Key | Short Key | Standard Hex Key | Short Key |
| 1008 | 1.386 | 7/4 | 2 3/8 | 2 1/8 | 1 15/16 | 1 11/16 | 1/4 x 1/2 | 1 1/8 | 5/8 | 1 1/4 | 3/4 |
| 1108 | 1.511 | 7/4 | 2 1/2 | 2 1/8 | 2 1/16 | 1 29/64 | 1/4 x 1/2 | 1 1/8 | 5/8 | 1 1/4 | 3/4 |
| 1210 | 1 7/8 | 1 | 3 3/8 | 3 1/4 | 2 7/8 | 1 3/4 | 3/8 x 5/8 | 1 3/8 | 1 1/2 | 1 5/8 | 1 1/16 |
| 1215 | 1 7/8 | 1 1/2 | 3 1/8 | 2 7/8 | 2 3/8 | 1 3/4 | 3/8 x 5/8 | 1 3/8 | 1 3/8 | 1 5/8 | 1 1/16 |
| 1310 | 2 | 1 | 3 3/4 | 3 3/8 | 3 | 1 7/8 | 3/8 x 5/8 | 1 3/8 | 1 3/8 | 1 5/8 | 1 1/16 |
| 1610 | 2 1/4 | 1 | 4 | 3 5/8 | 3 1/4 | 2 1/8 | 3/8 x 5/8 | 1 3/8 | 1 3/8 | 1 5/8 | 1 1/16 |
| 1615 | 2 1/4 | 1 1/2 | 3 1/2 | 3 1/4 | 3 | 2 1/8 | 3/8 x 5/8 | 1 3/8 | 1 3/8 | 1 5/8 | 1 1/16 |
| 2012 | 2 3/4 | 1 1/4 | 4 3/4 | 4 1/8 | 3 7/8 | 2 3/8 | 7/8 x 7/8 | 1 9/16 | 1 5/8 | 2 | 1 3/8 |
| 2517 | 3 3/8 | 1 3/4 | 5 1/2 | 4 7/8 | 4 3/8 | 3 1/4 | 1/2 x 1 | 1 5/8 | 1 | 2 1/4 | 1 5/8 |
| 2525 | 3 3/8 | 2 1/2 | 4 3/4 | 4 1/2 | 4 1/4 | 3 1/4 | 1/2 x 1 | 1 5/8 | 1 | 2 1/4 | 1 5/8 |
| 3020 | 4 1/4 | 2 | 7 | 6 1/4 | 5 5/8 | 4 | 5/8 x 1 1/4 | 1 11/16 | 1 3/8 | 2 1/16 | 2 1/16 |
| 3030 | 4 1/4 | 3 | 6 1/4 | 5 3/4 | 5 3/8 | 4 | 5/8 x 1 1/4 | 1 11/16 | 1 3/8 | 2 1/16 | 2 1/16 |



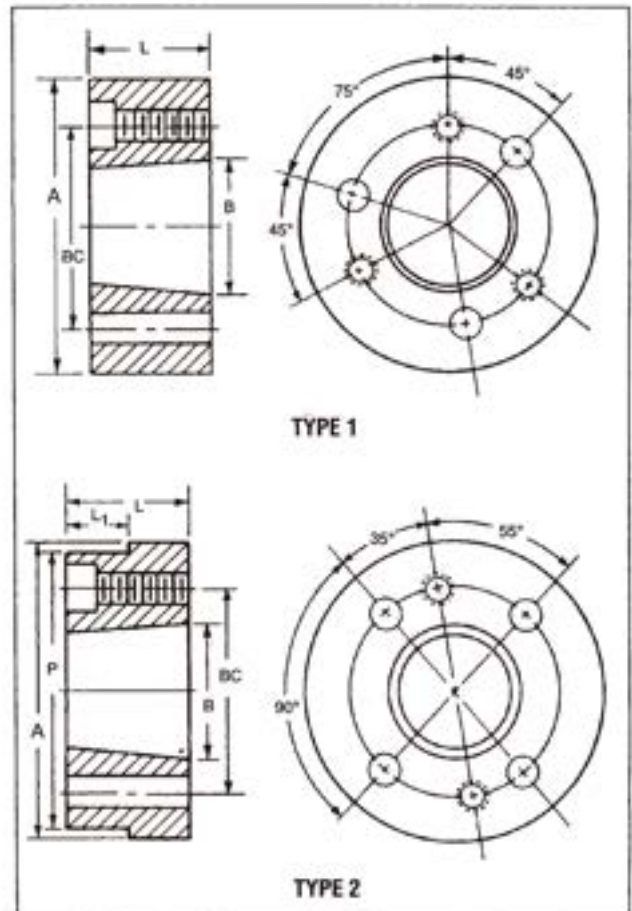


BUSHING

QD Style Weld-On Hubs



Weld-on hubs are made of steel, drill tapped and taper bored for QD bushings



QD Type 1 and Type 2 Weld-On Hubs

| Catalog Number | Dimensions — Inches | | | | | | Type Drilling | Weight Pounds |
|----------------|---------------------|----|--------|--------|----------------|-----|---------------|---------------|
| | A* | L | B | P | L ₁ | BC | | |
| JA-A | 2.250 | ¾ | 1.375 | — | — | 1½ | 1 | .4 |
| SH-A | 3.000 | ¾ | 1.871 | — | — | 2½ | 1 | 1 |
| SDS-A | 3.500 | ¾ | 2.188 | — | — | 2¾ | 1 | 1¼ |
| SK-A | 4.375 | 1¼ | 2.813 | — | — | 3¾ | 1 | 3 |
| SF-A | 5.000 | 1¼ | 3.125 | — | — | 3¾ | 1 | 4 |
| E-A | 6.250 | 1¾ | 3.832 | — | — | 5 | 1 | 9 |
| F-A | 7.000 | 2¼ | 4.437 | — | — | 5¾ | 1 | 16 |
| J-A | 7.750 | 3¾ | 5.140 | — | — | 6¾ | 1 | 22.5 |
| M-A | 9.500 | 5¾ | 6.494 | 9.250 | 3¾ | 7¾ | 2 | 50 |
| N-A | 10.500 | 6¾ | 6.990 | 10.250 | 4¾ | 8¾ | 2 | 75 |
| P-A | 13.000 | 7¾ | 8.240 | — | — | 10 | 2 | 155 |
| W-A | 15.500 | 9 | 10.437 | — | — | 12¾ | 2 | 300 |
| S-A | 19.500 | 12 | 12.125 | 18.75 | 7.5 | 15 | 2 | 558 |

*Tolerance of D Dimension
JA-A Thru J-A = (+.000-.002)
M-A Thru S-A = (+.000-.003)



BUSHING

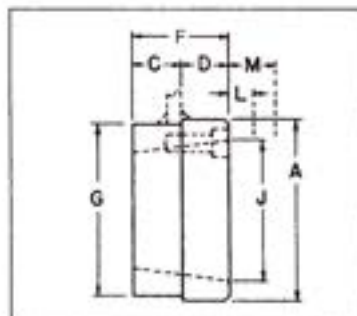
Taper Bushed Type S-type weld-on Hubs



Type S Weld-On Hubs are made of steel, drilled, tapped, and taper bored for tapered Bushing

Taper Bushed Type S Weld-On Hubs

| Hub Number | For Use with Bushing Number | Max. Size of Bushing | Weight | A | FD | CSW | SA | S | J |
|------------|-----------------------------|----------------------|--------|----|----|-------|-------|-----|----|
| S16-4 | 1610 | 1X | .9 | 3 | 1 | .275 | .725 | 2X† | 2X |
| S16-6 | 1610 | 1X | .9 | 3 | 1 | .450 | .550 | 2X† | 2X |
| S20-6 | 2012 | 2 | 1.8 | 3X | 1X | .450 | .800 | 3X† | 2X |
| S20-8 | 2012 | 2 | 1.4 | 3X | 1X | .570 | .680 | 3X† | 2X |
| S25-6 | 2517 | 2X | 2.6 | 4X | 1X | .450 | 1.300 | 4X† | 3X |
| S25-8 | 2517 | 2X | 2.6 | 4X | 1X | .565 | 1.185 | 4X† | 3X |
| S25-10 | 2517 | 2X | 2.5 | 4X | 1X | .685 | 1.065 | 4X† | 3X |
| S25-16 | 2517 | 2X | 2.4 | 4X | 1X | 1.090 | .660 | 4X† | 3X |
| S30-10 | 3020 | 3 | 4.3 | 5X | 2 | .675 | 1.325 | 5X† | 4X |
| S30-16 | 3020 | 3 | 4.2 | 5X | 2 | 1.090 | .910 | 5X† | 4X |
| S35 | 3535 | 3X | 12.8 | 6X | 3X | 1.160 | 2.340 | 6X‡ | 5 |



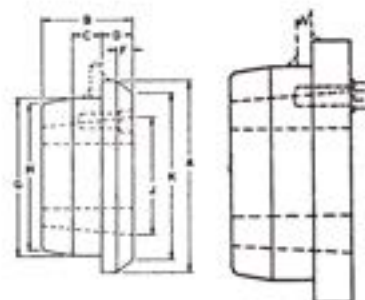
- † +0.000-0.002
- ‡ +0.005-0.010
- § +0.001-0.003
- Δ +0.000-0.005
- ★★ +0.01-0.01



Type WA Weld-On Hubs are made of steel, drilled, tapped, and taper bored for tapered Bushing

Taper Bushed Type WA Weld-On Hubs

| Hub Number | For Use with Bushing Number | Max. Size of Bushing | Weight | A | B | C | D | F | G | H | J | K |
|------------|-----------------------------|----------------------|--------|-----|----|----|----|---|-----|-----|-----|----|
| WA12 | 1215 | 1X | 1.3 | 2X | 1X | N | N | N | 2X† | 2X | 1X | 2X |
| WA16 | 1615 | 1X | 1.5 | 3X | 1X | N | N | N | 2X† | 2X | 2X | 3 |
| WA25 | 2517 | 2X | 4.0 | 4X | 1X | 3 | N | N | 4X† | 4X | 3X | 4X |
| WA30 | 3030 | 3 | 8.6 | 5X | 3 | N | N | N | 5X† | 4X | 4X | 5 |
| WA35 | 3535 | 3X | 15 | 6X | 3X | 1X | 1 | N | 6X† | 5X | 5 | 6 |
| WA40 | 4040 | 4 | 29 | 7X | 4 | 1X | 1 | N | 7X† | 6X | 5X | 7 |
| WA45 | 4545 | 4X | 42 | 8X | 4X | 1X | 1 | N | 8X† | 7X | 6X | 8 |
| WA50 | 5050 | 5 | 57 | 9X | 5 | 1X | 1 | N | 8X | 8X | 7 | 8X |
| WA60 | 6050 | 6 | 115 | 13X | 5 | 1X | 1X | | 12X | 11X | 9X | |
| WA70 | 7060 | 7 | 155 | 14X | 6 | 2X | 1X | | 13X | 13X | 10X | |
| WA80 | 8065 | 8 | 180 | 15X | 6X | 2X | 1X | | 14X | 14 | 11X | |
| WA100 | 10085 | 10 | 340 | 19X | 8X | 3X | 1X | | 18X | 18X | 14X | |

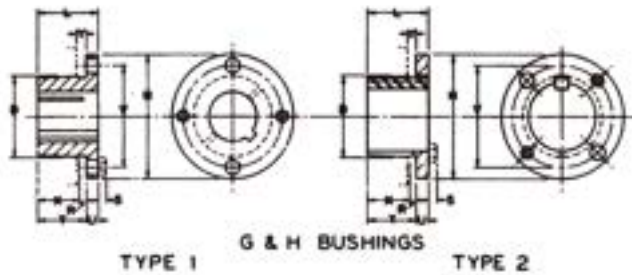


- † +0.000-0.002
- ‡ +0.000-0.003
- ★ +0.000-0.004

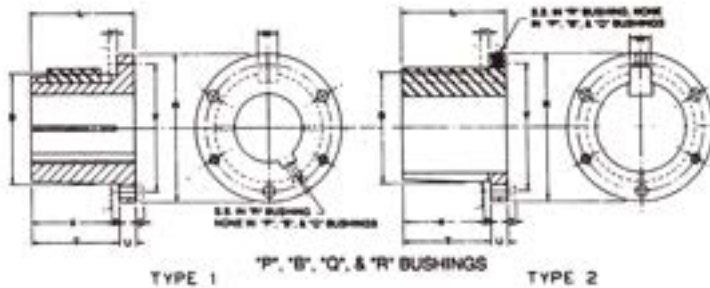


BUSHING

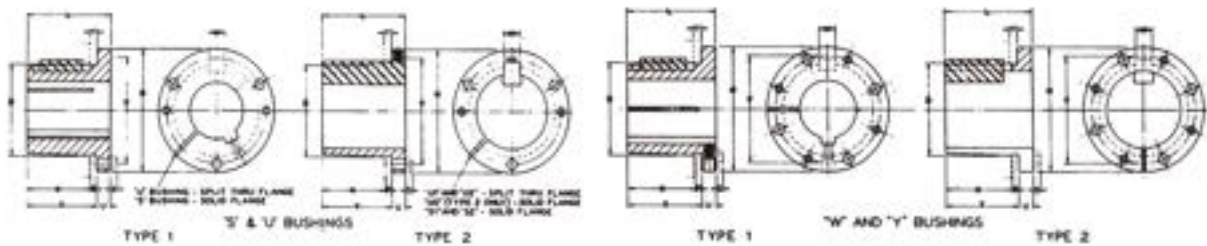
Split Taper Bushings



TYPE 1 G & H BUSHINGS TYPE 2



TYPE 1 "P", "B", "Q", & "R" BUSHINGS TYPE 2



TYPE 1 "S" & "V" BUSHINGS TYPE 2 TYPE 1 "W" AND "Y" BUSHINGS TYPE 2



Split Taper Bushings

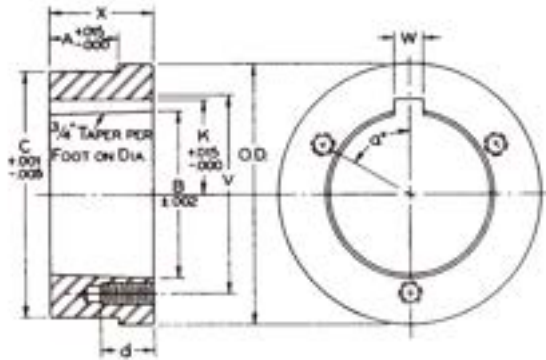
| PART NO. | Dimensions | | | | | | | | | | | | Bore Range | | Cap Screws | | AV. WT. Lbs | Wrench Torque in-Lbs |
|----------|------------|---------|---------|-----------|-----------|---------|---------|--------|---------|-------|-------|--------|------------------|-----------------|------------|----------------|-------------|----------------------|
| | L | U | T | D | | H | V | W | X | Y | R | S | Type 1 | Type 2 | No. | Size | | |
| | | | | Large End | Small End | | | | | | | | | | | | | |
| G | 1" | 1/4" | 3/4" | 1.172" | 1.133 | 2" | 1 1/16" | - | 5/8" | 3/16" | 1/8" | 3/16" | 3/8"-15/16" | 1" | 2 | 1/4" x 5/8" | 5 | 95 |
| H | 1 1/4" | 3/4" | 1" | 1.825 | 1.570 | 2 1/2" | 2" | - | 7/8" | 3/16" | 1/8" | 3/16" | 3/8"-1 3/8" | 1 7/16"-1 1/2" | 2 | 1/4" x 3/4" | 8 | 95 |
| P1 | 1 1/16" | 13/32" | 1 1/32" | 1.9375 | 1.8555 | 3" | 2 1/16" | 3/8" | 1 1/16" | 7/32" | 7/32" | 1/4" | 1/2"-1 7/16" | 1 1/2"-1 3/4" | 3 | 5/16" x 1" | 1.3 | 192 |
| P2 | 2 1/16" | 13/32" | 2 1/32" | 1.9375 | 1.7900 | 3" | 2 1/16" | 3/8" | 2 1/16" | 7/32" | 7/32" | 1/4" | 3/4"-1 7/16" | 1 1/2"-1 3/4" | 3 | 5/16" x 1" | 1.5 | 192 |
| P3 | 4 1/16" | 13/32" | 4 1/32" | 1.9375 | 1.6993 | 3" | 2 1/16" | 3/8" | 3 1/16" | 7/32" | 7/32" | 1/4" | 1 1/8"-1 3/8" | 1 5/8" | 3 | 5/16" x 1" | 2 | 192 |
| B | 1 1/16" | 1/2" | 1 1/16" | 2.625 | 2.5667 | 3 1/16" | 3 1/8" | 1/2" | 1 1/16" | 7/32" | 1/4" | 1/4" | 1/2"-1 15/16" | 2-2 7/16" | 3 | 5/16" x 1 1/4" | 1.8 | 192 |
| Q1 | 2 1/2" | 17/32" | 1 1/32" | 2.875 | 2.7657 | 4 1/8" | 3 3/8" | 1/2" | 1 1/4" | 7/32" | 7/32" | 9/32" | 3/4"-2 1/16" | 2 1/8"-2 11/16" | 3 | 3/8" x 1 1/4" | 3.5 | 348 |
| Q2 | 3 1/2" | 17/32" | 2 1/32" | 2.875 | 2.7032 | 4 1/8" | 3 3/8" | 1/2" | 2 1/4" | 7/32" | 7/32" | 9/32" | 1-2 1/16" | 2 1/8"-2 5/8" | 3 | 3/8" x 1 1/4" | 4.5 | 348 |
| Q3 | 5" | 17/32" | 4 1/32" | 2.875 | 2.6094 | 4 1/8" | 3 3/8" | 1/2" | 4 1/4" | 7/32" | 7/32" | 9/32" | 1 3/8"-2 1/16" | 2 1/8"-2 1/2" | 3 | 3/8" x 1 1/4" | 5.5 | 348 |
| R1 | 2 1/8" | 5/8" | 2 1/4" | 4.000 | 3.8750 | 5 1/8" | 4 5/8" | 3/4" | 2" | 1/4" | 1/4" | 9/32" | 1 1/8"-2 13/16" | 2 7/8"-3 3/4" | 3 | 3/8" x 1 3/4" | 7.5 | 348 |
| R2 | 4 1/8" | 5/8" | 4 1/4" | 4.000 | 3.7500 | 5 1/8" | 4 5/8" | 3/4" | 4" | 1/4" | 1/4" | 9/32" | 1 3/8"-2 13/16" | 2 7/8"-3 5/8" | 3 | 3/8" x 1 3/4" | 11 | 348 |
| S1 | 4 1/8" | 3/4" | 3 3/8" | 4.625 | 4.4180 | 6 1/8" | 5 3/8" | 3/4" | 3 1/16" | 5/16" | 5/16" | 3/8" | 1 11/16"-3-3/16" | 3 1/4"-4 1/4" | 3 | 1/2" x 2 1/4" | 13.5 | 840 |
| S2 | 6 1/4" | 3/4" | 6" | 4.625 | 4.2696 | 6 1/8" | 5 3/8" | 3/4" | 5 1/16" | 5/16" | 5/16" | 3/8" | 1 7/8"-3 3/16" | 3 1/4"-4 3/16" | 3 | 1/2" x 2 1/4" | 19 | 840 |
| U0 | 5 1/4" | 1 1/16" | 4 1/16" | 6.000 | 5.7656 | 8 1/8" | 7" | 1 1/4" | 3 1/4" | 7/16" | 7/16" | 15/32" | 2 3/8"-3 1/16" | - | 3 | 5/8" x 2 3/4" | 30 | 1680 |
| U1 | 4 7/16" | 3/4" | 4 1/16" | 6.000 | 5.7656 | 8 1/8" | 7" | 1 1/4" | 3 1/4" | 7/16" | 7/16" | 15/32" | 3 1/4"-4 1/4" | 4 3/8"-5 1/2" | 3 | 5/8" x 2 3/4" | 27 | 1680 |
| U1 | 7 1/8" | 1 1/16" | 6 1/16" | 6.000 | 5.6485 | 8 1/8" | 7" | 1 1/4" | 5 1/8" | 7/16" | 7/16" | 15/32" | 2 3/8"-4 1/4" | 4 3/8"-5 1/2" | 3 | 5/8" x 2 3/4" | 40 | 1680 |
| U2 | 10 1/8" | 1 1/16" | 9 1/16" | 6.000 | 5.4610 | 8 1/8" | 7" | 1 1/4" | 8 1/8" | 7/16" | 7/16" | 15/32" | 2 7/16"-4 1/4" | 4 3/8"-5" | 3 | 5/8" x 2 3/4" | 50 | 1680 |
| W1 | 8 1/4" | 1 1/16" | 6 1/16" | 8.500 | 8.1016 | 12 1/2" | 10" | 1 1/4" | 6 1/8" | 7/16" | 7/16" | 9/16" | 3 3/8"-6 3/16" | 6 1/4"-7 7/16" | 4 | 3/4" x 3" | 104 | 3000 |
| W2 | 11 1/4" | 1 1/16" | 9 1/16" | 8.500 | 7.9141 | 12 1/2" | 10" | 1 1/4" | 9 1/8" | 7/16" | 7/16" | 9/16" | 3 3/8"-6 3/16" | 6 1/4"-7 7/16" | 4 | 3/4" x 3" | 133 | 3000 |
| Y0 | 11 1/8" | 2" | 9 1/8" | 12.000 | 11.4668 | 16 1/2" | 14 1/2" | 2" | 8 1/2" | 5/8" | 5/8" | 5/8" | 6 7/16"-16" | 8-10" | 4 | 1" x 5" | 270 | 7200 |

Note: Taper on all Bushings is 3/4" Per Foot on Diameter.

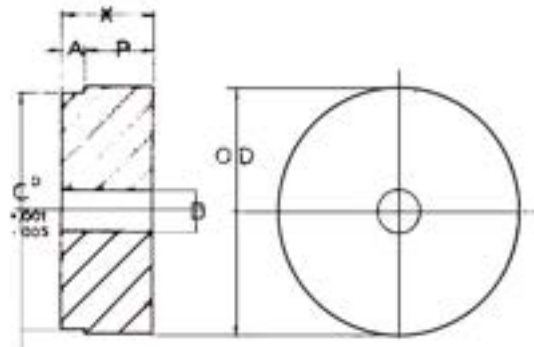


BUSHING

Steel Hubs



Steel Hubs for Split Taper Bushings



Type "B" Steel Hubs

Steel Hubs for Split Taper Bushings

| Part No. | For Bushing | Dimensions | | | | | | | | | | Tapped Holes | | Wt. Lbs. |
|----------|-------------|------------|--------|--------|--------|---------|---------|-------|---------|--------|-------|--------------|---------|----------|
| | | O.D. | A | B | C | K | V | W | X | a | d | No. | Size | |
| HG1 | G | 2" | 0.174" | 1.168 | 1.875" | - | 1 9/16" | - | 5/8" | - | 5/8" | 2 | 1/4-20 | 0.4 |
| HH1 | H | 2 1/2 | 0.174 | 1.621 | 2.375 | - | 2 | - | 7/8 | - | 7/8 | 2 | 1/4-20 | 0.6 |
| HCH1 | H | 2 1/2 | 0.625 | 1.621 | 2.375 | - | 2 | - | 7/8 | - | 7/8 | 2 | 1/4-20 | 0.7 |
| HP1 | P1 | 3 | 0.292 | 1.9375 | 2.875 | 1 3/32" | 2 7/16 | 3/8" | 1 5/16 | 60 | 5/8 | 3 | 5/16-18 | 1.4 |
| HCP1 | P1 | 3 | 1.000 | 1.9375 | 2.875 | 1 3/32" | 2 7/16 | 3/8 | 1 5/16 | 60 | 5/8 | 3 | 5/16-18 | 1.1 |
| HP2 | P2 | 3 | 1.100 | 1.9375 | 2.875 | 1 3/32" | 2 7/16 | 3/8 | 2 5/16 | 60 | 5/8 | 3 | 5/16-18 | 2.5 |
| HB1 | B | 3 7/8 | 0.292 | 2.623 | 3.750 | 1 7/16 | 3 1/8 | 1/2 | 1 5/16 | 60 | 13/16 | 3 | 5/16-18 | 2.3 |
| HB2 | B | 4 1/2 | 0.709 | 2.623 | 4.375 | 1 7/16 | 3 1/8 | 1/2 | 1 3/4 | 60 | 13/16 | 3 | 5/16-18 | 4.7 |
| HQ1 | Q1 | 4 1/2 | 0.709 | 2.875 | 4.375 | 1 9/16 | 3 3/8 | 1/2 | 1 3/4 | 60 | 7/8 | 3 | 3/8-16 | 4.4 |
| HQ1 | Q1 | 4 1/2 | 1.250 | 2.875 | 4.375 | 1 9/16 | 3 3/8 | 1/2 | 1 3/4 | 60 | 7/8 | 3 | 3/8-16 | 4.4 |
| HQ2 | Q2 | 4 1/2 | 1.606 | 2.875 | 4.375 | 1 9/16 | 3 3/8 | 1/2 | 2 3/4 | 60 | 7/8 | 3 | 3/8-16 | 6.9 |
| HR1 | R1 | 5 3/4 | 0.709 | 4.000 | 5.625 | 2 3/16 | 4 5/8 | 3/4 | 2 | 60 | 1 1/8 | 3 | 3/8-16 | 7.3 |
| HR2 | R2 | 5 3/4 | 1.606 | 4.000 | 5.625 | 2 3/16 | 4 5/8 | 3/4 | 4 | 60 | 1 1/8 | 3 | 3/8-16 | 15.4 |
| HS1 | S1 | 6 3/4 | 0.946 | 4.625 | 6.500 | 2 9/16 | 5 3/8 | 3/4 | 3 5/16 | 60 | 1 5/8 | 3 | 1/2-13 | 17.3 |
| HS2 | S2 | 6 3/4 | 2.963 | 4.625 | 6.500 | 2 9/16 | 5 3/8 | 3/4 | 5 11/16 | 60 | 1 5/8 | 3 | 1/2-13 | 30.4 |
| HU0 | U0 | 8 1/2 | 2.000 | 6.000 | 8.250 | 3 1/4 | 7 | 1 1/4 | 3 3/4 | 60 | 2 | 3 | 5/8-11 | 32.0 |
| HU1 | U1 | 8 1/2 | 2.963 | 6.000 | 8.250 | 3 1/4 | 7 | 1 1/4 | 5 5/8 | 60 | 1 3/4 | 3 | 5/8-11 | 44.6 |
| HU2 | U2 | 8 1/2 | 6.016 | 6.000 | 8.250 | 3 1/4 | 7 | 1 1/4 | 6 5/8 | 60 | 1 3/4 | 3 | 5/8-11 | 69.0 |
| HW1 | W1 | 12 1/2 | 2.963 | 8.500 | 12.250 | 4 9/16 | 10 | 1 1/4 | 6 3/8 | 22 1/2 | 1 3/4 | 4 | 3/4-10 | 130.0 |

Type "B" Steel Hubs

| Part No. | Dimensions | | | | | Bore | | Wt. Lbs. |
|----------|------------|--------|--------|--------|--------|-------|--------|----------|
| | O.D. | A | C | P | X | Stock | Max. | |
| HB40 | 3" | 0.281" | 2.875" | 27/32" | 1 1/8" | 1/2" | 1 7/8" | 2.3 |
| HB50 | 3 1/4 | 0.344 | 3.125 | 1 1/32 | 1 3/8 | 5/8 | 2 1/4 | 3.0 |
| HB60 | 4 | 0.469 | 3.875 | 1 1/32 | 1 1/2 | 5/8 | 2 3/8 | 5.0 |
| HB80 | 5 | 0.563 | 4.875 | 1 1/2 | 2 1/16 | 3/4 | 3 | 11.1 |
| HB100 | 5 1/4 | 0.688 | 5.125 | 2 1/16 | 2 3/4 | 1 | 3 1/4 | 16.3 |

NOTE-"A" dimension is plate thickness of sprocket for chain indicated in part number. Other plates can be used by Re machining "A" dimension.



BUSHING

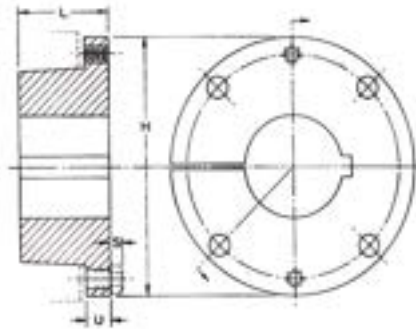
Steel Hubs

XT BUSHINGS

| Table No. 1 | | | | | | | |
|------------------|------------|--------|----------|-------|------------|-------------|----------|
| Bushing Part No. | Dimensions | | | | Cap Screws | | Wt. Lbs. |
| | L | U | H | S | No. | Size | |
| XTB15 | 1 1/8 | 3/8 | 2 7/8 | 5/32 | 4 | 1/4X1 | 0.7 |
| XTB20 | 1 13/32 | 15/32 | 3 3/4 | 7/32 | 4 | 5/16X1 1/4 | 1.5 |
| XTB25 | 1 7/8 | 5/8 | 4 7/16 | 1/4 | 4 | 3/8X1 3/4 | 2.6 |
| XTB30 | 2 1/16 | 1 1/16 | 5 5/16 | 9/32 | 4 | 7/16X1 1/2 | 4.2 |
| XTB35 | 2 15/32 | 25/32 | 6 5/16 | 5/16 | 4 | 1/2X1 3/4 | 7.4 |
| XTB40 | 2 13/16 | 7/8 | 7 1/8 | 3/8 | 4 | 9/16X2 | 10.5 |
| XTB45 | 3 5/16 | 15/16 | 8 | 13/32 | 4 | 5/8X2 1/4 | 14.8 |
| XTB50 | 3 3/4 | XTB15 | 10 1/8 | 15/32 | 4 | 3/4X2 1/2 | 27.8 |
| | | XTB20 | | | | | |
| XTB60 | 4 1/8 | XTB25 | 11 15/16 | 9/16 | 4 | 7/8X2 1/2 | 42.8 |
| XTB70 | 4 11/16 | XTB30 | 13 15/16 | 5/8 | 4 | 1X3 | 66.3 |
| XTB80 | 5 1/8 | 1 3/8 | 15 5/8 | 11/16 | 4 | 1 1/8X3 1/2 | 85.7 |
| XTB100 | 6 3/16 | 1 9/16 | 17 15/16 | 11/16 | 6 | 1 1/8X3 1/2 | 146 |
| XTB120 | 7 1/16 | 1 3/4 | 20 5/8 | 11/16 | 8 | 1 1/8X3 1/2 | 216 |

Table No. 2

| Bushing Part No. | Stock Bores | Keyseat | Key Supplied |
|------------------|-------------------------------|-----------|----------------|
| XTB15 | 5/8, 3/4, 7/8, | 3/16X3/32 | none |
| | 1, 1 1/8, 1 3/16, 1 1/4, | 1/4X1/8 | none |
| | 1 7/16, 1 1/2 | 3/8X1/8 | 3/8X5/16X1 1/8 |
| XTB20 | 3/4 | 3/16X3/32 | none |
| | 1, 1 3/16, 1 1/4 | 1/4X1/8 | none |
| | 1 7/16, 1 1/2, 1 11/16 | 3/8X3/16 | none |
| XTB25 | 1 15/16, 2 | 1/2X3/16 | 1/2X7/16X1 3/8 |
| | 1, 1 3/16, 1 1/4 | 1/4X1/8 | none |
| | 1 7/16, 1 1/2, 1 11/16, 1 3/4 | 3/8X3/16 | none |
| | 1 15/16, 2, 2 3/16 | 1/2X1/4 | none |
| XTB30 | 2 7/16 | 5/8X1/8 | 5/8X7/16X1 3/4 |
| | 1 7/16, 1 1/2, 1 11/16 | 3/8X3/16 | none |
| | 1 15/16, 2 3/16 | 1/2X1/4 | none |
| | 2 7/16, 2 11/16 | 5/8X5/16 | none |
| XTB35 | 2 15/16 | 3/4X3/16 | 3/4X9/16X2 |
| | 1 15/16, 2 3/16 | 1/2X1/4 | none |
| | 2 7/16, 2 11/16 | 5/8X5/16 | none |
| | 2 15/16 | 3/4X3/8 | none |
| XTB40 | 3 7/16 | 7/8X5/16 | 7/8X3/4X2 1/2 |
| | 2 7/16 | 5/8X5/16 | none |
| | 2 15/16 | 3/4X3/8 | none |
| XTB45 | 3 7/16 | 7/8X7/16 | none |
| | 3 15/16 | 1X1/2 | none |
| | 4 7/16 | 1X3/8 | 1X7/8X3 1/4 |
| XTB50 | 3 15/16, 4 7/16 | 1X1/2 | none |
| | 4 15/16 | 1 1/4X5/8 | none |
| XTB60 | 5 7/16, 5 1/2 | 1 1/2X3/4 | none |
| | 5 15/16, 6 | 1 1/2X3/4 | none |
| XTB70 | 6 7/16, 6 1/2 | 1 3/4X3/4 | none |
| | 6 15/16, 7 | 1 3/4X3/4 | none |
| XTB80 | 7 1/2 | 2X3/4 | none |
| | 7 15/16, 8 | 2X3/4 | none |
| XTB100 | 8 1/2, 9 | 2 1/2X7/8 | none |
| | 9 7/16, 9 1/2, 10 | 2 1/2X7/8 | none |
| XTB120 | 10 1/2, 11 | 3X1 | none |
| | 11 1/2, 12 | 3X1 | none |



RECOMMENDED CAP SCREW TORQUE

| XT Size | Wrench Torque(in.) | Cap Screw Size |
|---------|--------------------|----------------|
| 15 | 95 | 1/4 |
| 20 | 200 | 5/16 |
| 25 | 350 | 3/8 |
| 30 | 550 | 7/16 |
| 35 | 840 | 1/2 |
| 40 | 1200 | 9/16 |
| 45 | 1680 | 5/8 |
| 50 | 3000 | 3/4 |
| 60 | 4800 | 7/8 |
| 70 | 7200 | 1 |
| 80 | 9000 | 1 1/8 |
| 100 | 9000 | 1 1/8 |
| 120 | 9000 | 1 1/8 |



BUSHING

Steel Hubs

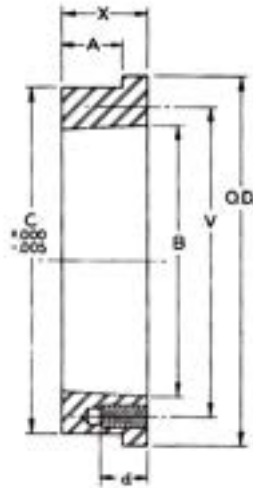


Table No. 1

| Part No | For Bushing | Dimensions | | | | | | | Tapped Holes | | Wt. Lbs. |
|---------|-------------|------------|---------|--------|---------|---------|---------|---------|--------------|-----------|----------|
| | | O.D. | A | B | C | V | x | d | No. | Size | |
| XTH15 | XTB15 | 3 1/4" | 7/16" | 2.000" | 2 7/8" | 2 7/16" | 5/8" | 5/8" | 4 | 1/4"-20NC | 0.7 |
| XTH20 | XTB20 | 4 1/8 | 9/16 | 2.688 | 3 13/16 | 3 3/16 | 13/16 | 13/16 | 4 | 5/16-18NC | 1.5 |
| XTH25 | XTB25 | 4 3/4 | 13/16 | 3.188 | 4 3/8 | 3 3/4 | 1 1/8 | 1 1/8 | 4 | 3/8-16NS | 2.6 |
| XTH30 | XTB30 | 6 | 7/8 | 3.875 | 5 3/4 | 4 9/16 | 1 1/4 | 1 1/16 | 4 | 7/16-14NC | 4.1 |
| XTH35 | XTB35 | 6 5/8 | 1 1/16 | 4.688 | 6.345 | 5 7/16 | 1 1/2 | 1 1/4 | 4 | 1/2-13NC | 6.6 |
| XTH40 | XTB40 | 7 5/8 | 1 1/4 | 5.313 | 7 1/4 | 6 1/8 | 1 3/4 | 1 3/8 | 4 | 9/16-12NC | 10.7 |
| XTH45 | XTB45 | 8 3/8 | 1 1/2 | 5.938 | 8 | 6 7/8 | 2 1/8 | 1 9/16 | 4 | 5/8-11NC | 15.4 |
| XTH50 | XTB50 | 10 | 1 3/4 | 7.250 | 9 9/16 | 8 5/16 | 2 1/2 | 1 3/4 | 4 | 3/4-10NC | 24.9 |
| XTH60 | XTB60 | 11 3/4 | 1 15/16 | 8.625 | 11 1/4 | 9 7/8 | 2 3/4 | 1 5/8 | 4 | 7/8-9NC | 36.4 |
| XTH70 | XTB70 | 13 11/16 | 2 3/16 | 10.000 | 13 3/16 | 11 9/16 | 3 1/8 | 1 15/16 | 4 | 1-8NC | 57.7 |
| XTH80 | XTB80 | 15 | 2 7/16 | 11.125 | 14 5/8 | 12 7/8 | 3 7/16 | 2 3/8 | 4 | 1 1/8-7NC | 75.6 |
| XTH100 | XTB100 | 18 | 3 | 13.688 | 17 1/2 | 15 9/16 | 4 1/8 | 2 3/16 | 6 | 1 1/8-7NC | 122 |
| XTH120 | XTB120 | 21 | 3 1/2 | 16.188 | 20 1/2 | 18 3/16 | 4 13/16 | 2 | 8 | 1 1/8-7NC | 189 |

